

Welcome to TimeCamp Help!

Search for articles...

88

TimeCamp Planner

In this article:

- [Overview](#)
- [Enable integration](#)
- [Track time on imported items](#)
- [Disable integration](#)

TimeCamp Planner is a free and simple project management software with communication and collaboration features. By enabling the TimeCamp and Planner integration you'll be able to track time on your workspaces, spaces, and lists with cards.

Overview

The integration will be enabled to the entire account, so **all users will be able to track time on imported tasks**. The integration will be connected to the Planner account of the person who enabled the integration.

Workspaces will be imported as tasks under the Planner project. Projects with their lists of tasks will be imported as subtasks under the tasks (workspaces) in TimeCamp. If someone from your Team added private project in Planner and the person who created the integration has no access to those projects, they won't be imported to TimeCamp. **Only items the owner of integration has access to could be imported.**

It is not possible to edit the structure of imported items in TimeCamp.

After the integration is created and the Planner items are imported, **all users will be automatically assigned to the Planner project and tasks as Regular users**. You can manually change their roles in this project and unassign selected users from the entire project or add them only to certain tasks. If users are assigned to the main project Planner they will be able to track time to all tasks under the Planner project structure. If users are assigned only to certain tasks, they will be able to track time only to these tasks and subtasks under the tasks' structure.

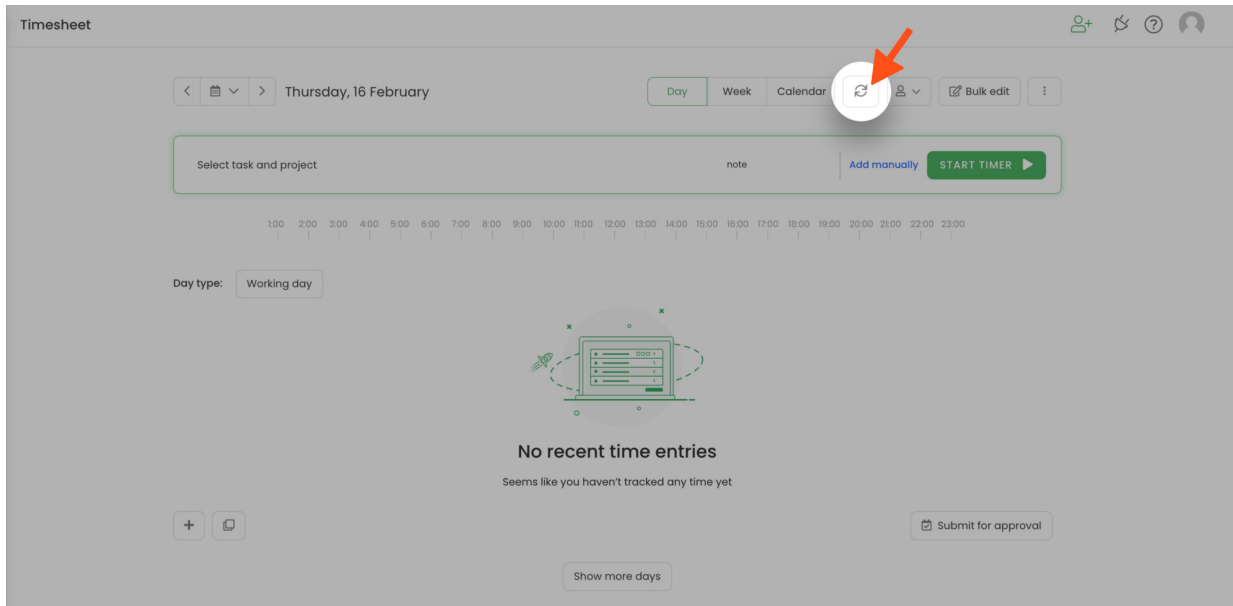
We don't provide an option to select items that should or should not be imported from Planner to TimeCamp. After the integration is enabled all workspaces, projects, and lists with tasks the owner of

integration has access to will be imported to the Projects module in TimeCamp.

We don't provide an option to export tracked time from TimeCamp to Planner account.

Tasks, lists, projects, and workspaces marked as archived or deleted in Planner will be automatically moved to the list of Archived tasks in TimeCamp. The completed tasks will stay on the list of active tasks in TimeCamp.

If you create a new item in Planner it will be automatically imported to TimeCamp within 1 hour. To immediately synchronize the integration and update newly added items use the “Force synchronization” option on TimeCamp web Timesheet. Synch will be executed within a few seconds.



The additional functionality we provide for a Planner integration is a **native plugin** that allows tracking time directly within the TimeCamp Planner website.

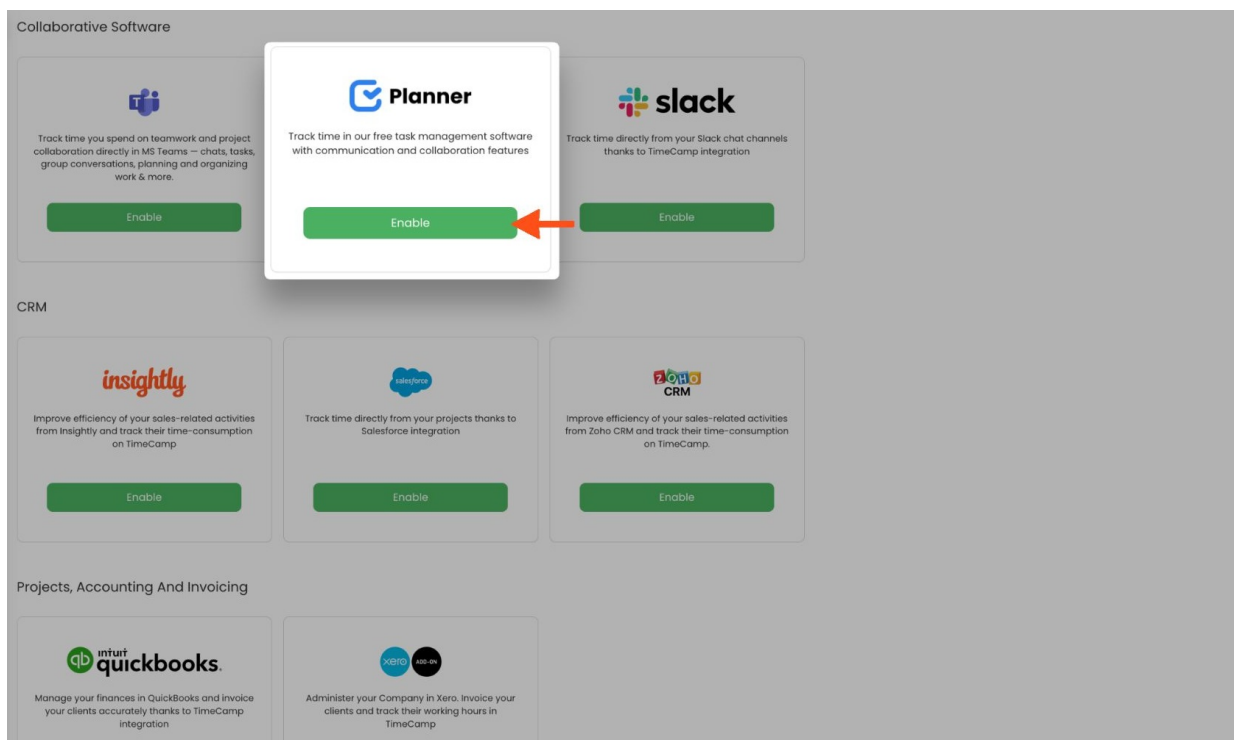
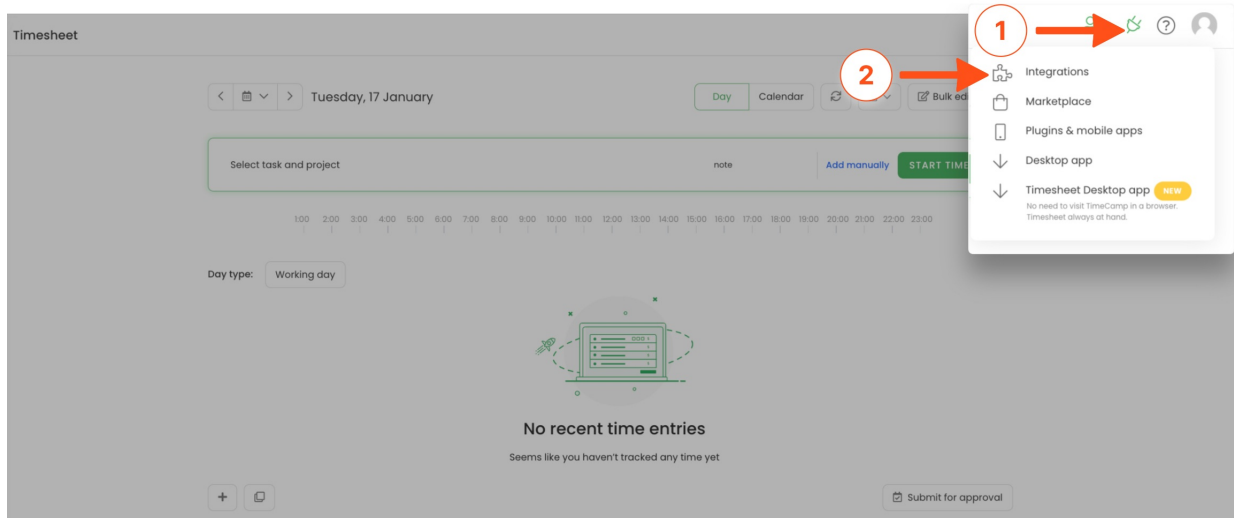
If the user who enabled the integration is not a part of your account anymore, we recommend re-enabling the integration.

Enable integration

Only the Administrator of the account can enable the integration.

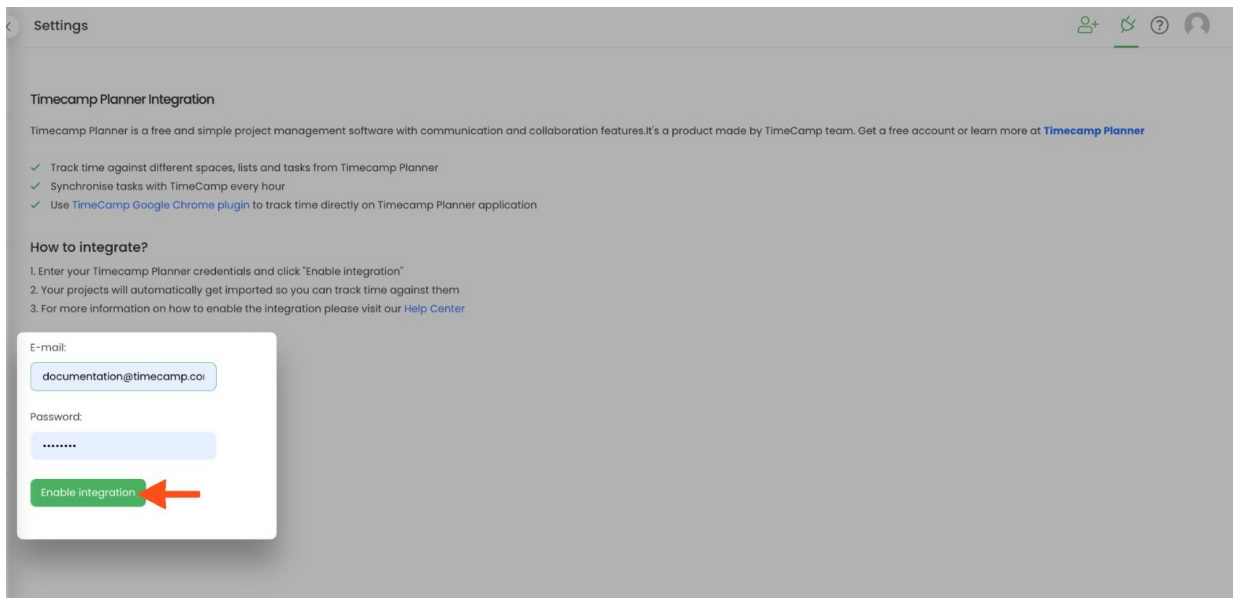
Step 1

To enable the Planner integration, navigate to the gear in the upper-right corner and click on the **Integrations** option. Next, find the **Planner** integration on the list and click the **Enable** button.



Step 2

Enter your **Planner credentials** (email and password) and click on the green **Enable integration** button.



That's it! Your Workspaces, Projects and Lists with Tasks will be imported to the Projects module in TimeCamp. All imported items will be accessible for you to track time using TimeCamp's timesheets, mobile, desktop application, or browser plugin.

Track time on imported items

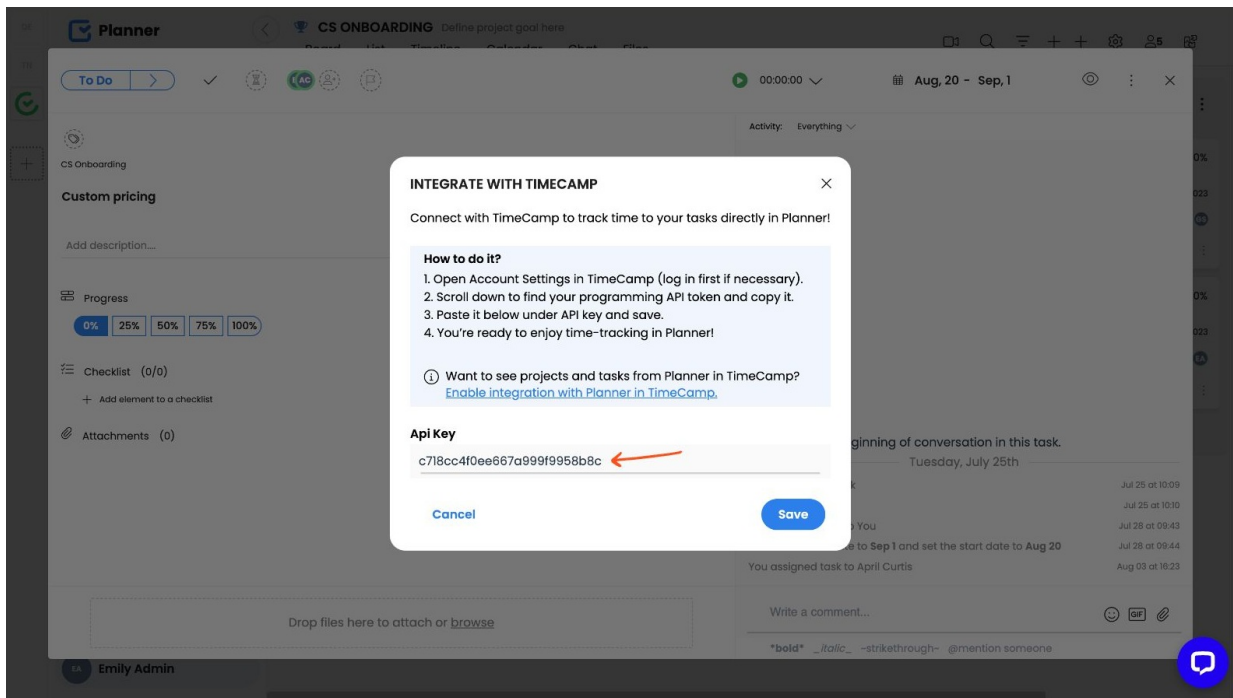
There are a few ways of tracking time in TimeCamp. After the integration is created and all your tasks are imported, you can simply select the desired task from the list and start your timer. Below you can find examples of all available ways of tracking time.

Web Timesheet. Simply select a task using a search box or the drop-down list and run the timer. [Learn more](#)

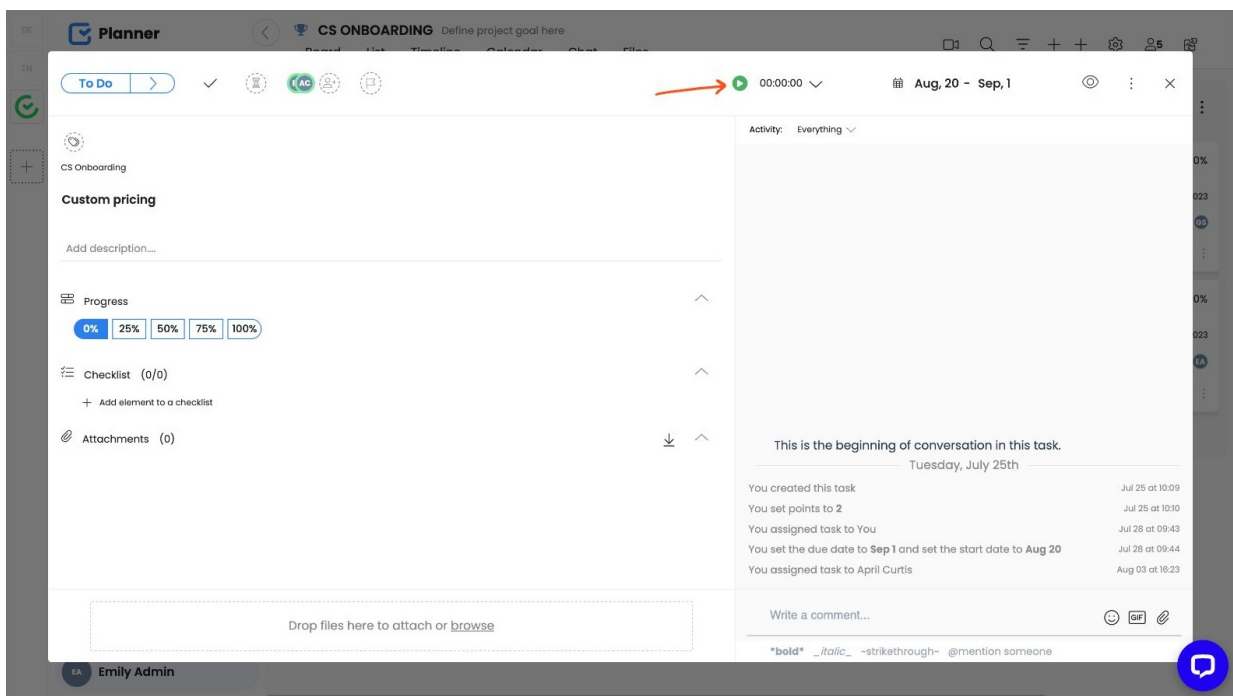
Desktop app. Click on the "No task" option in a task widget or use the option "Start a task" from the desktop app menu and use a search box or the drop-down list to find the target task. The task widget will be automatically synchronized with your web Timesheet. [Learn more](#)

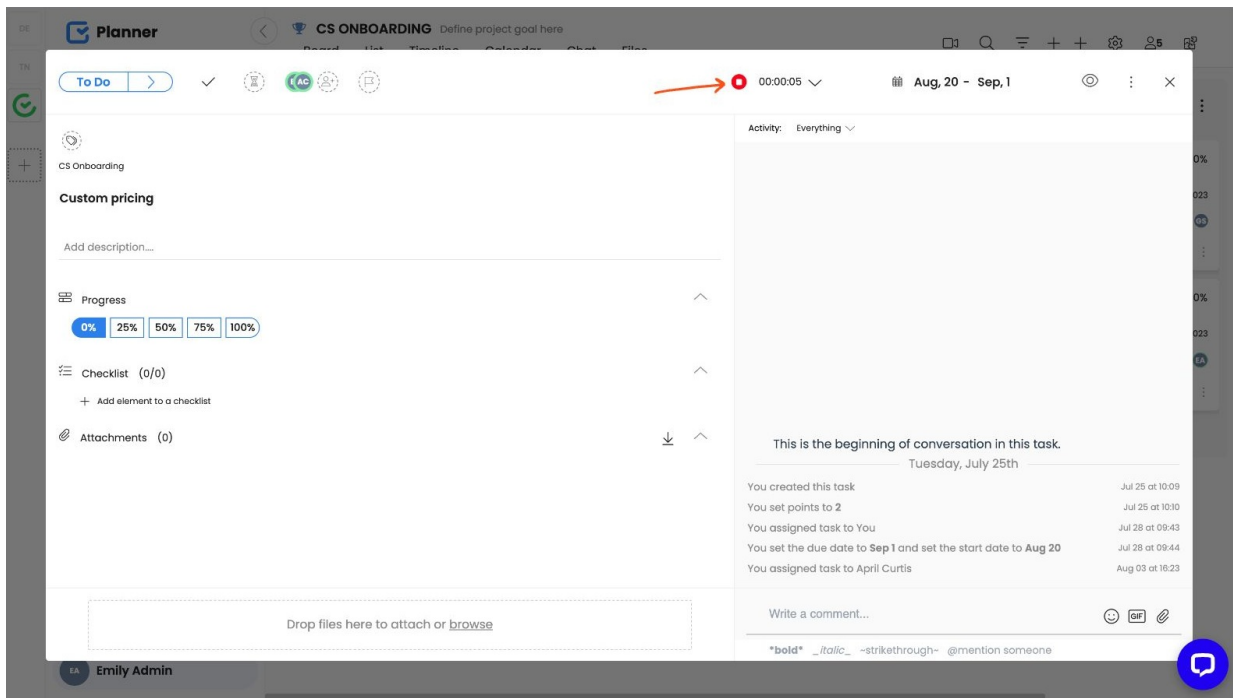
Mobile app. Go to your Timesheet in the mobile app and click on the "Add" button if you want to create an entry manually or on the "Start" button if you prefer to track time in real time. Next, use a search box or the drop-down list to find the target task and start tracking. [Learn more](#)

Native plugin. If you open a task in TimeCamp Planner you'll notice a start timer button on the top part of a task. When you click on the green "Start timer" button for the first time, you'll need to authorize the integration by entering an [API token](#) from your TimeCamp account.



After integration is authorized click on the green “Start timer” button to start tracking. When you finished tracking just click on the red “Stop tracking” button. The plugin will be automatically synchronized with your web Timesheet [Learn more](#)



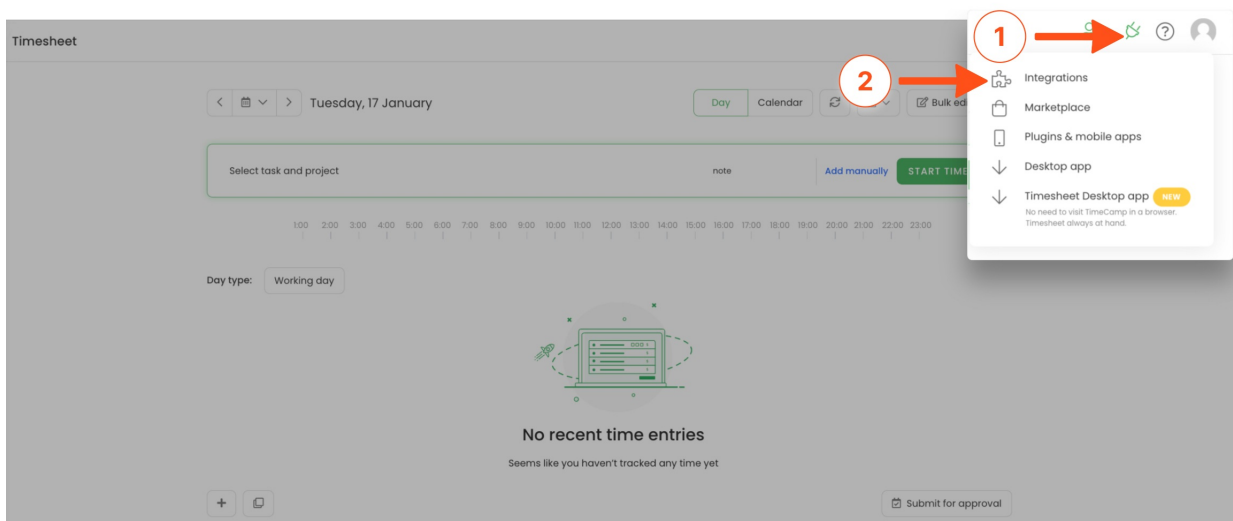


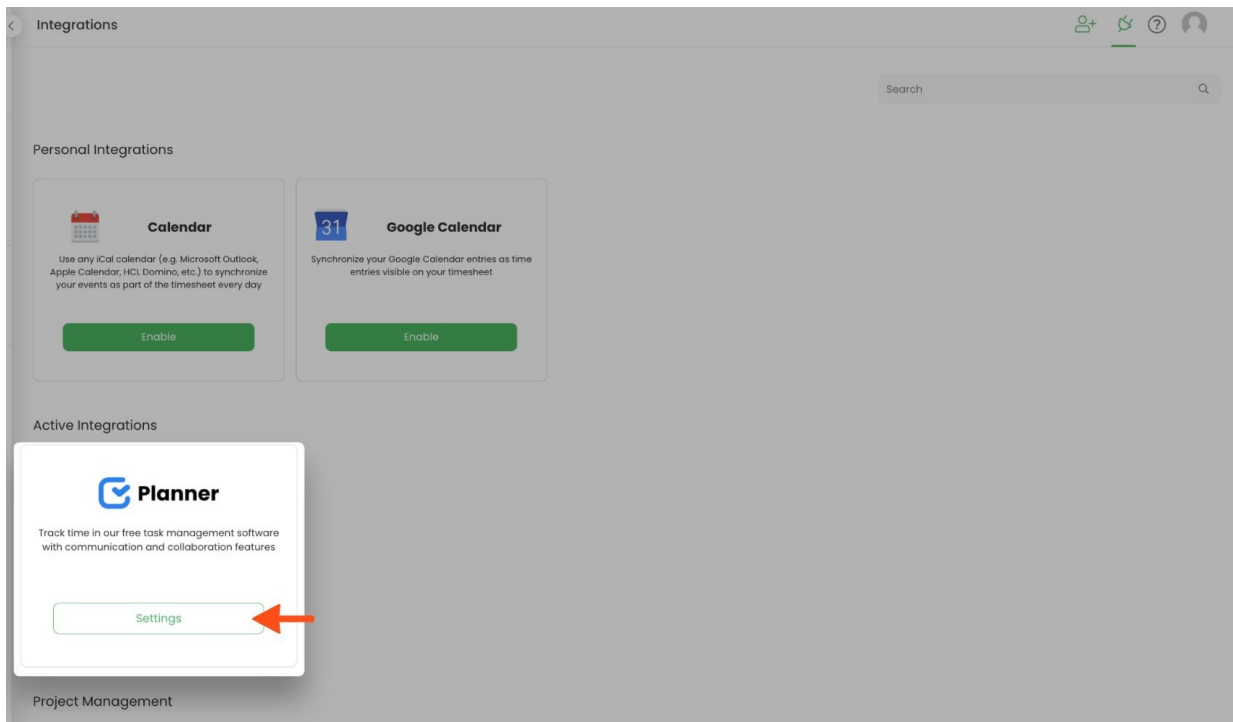
Disable integration

Only the Administrator of the account can unlink or re-enable the integration.

Step 1

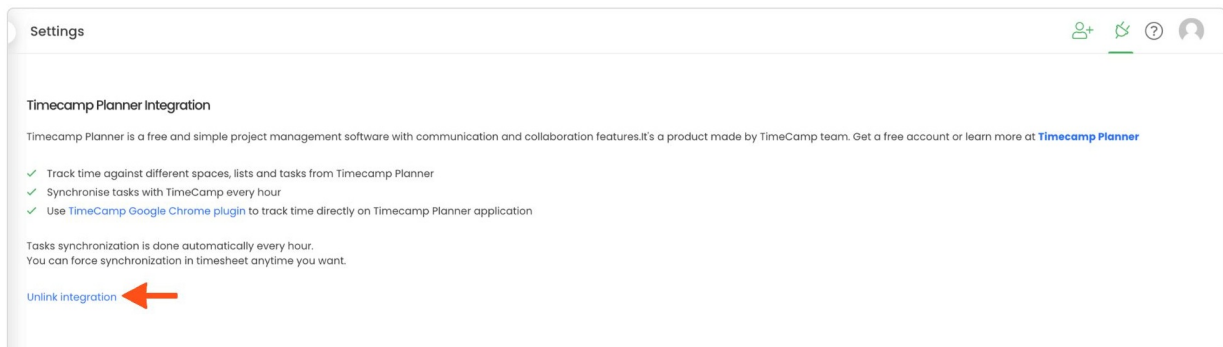
If for some reason you would like to reenable or unlink the integration please navigate to the plugin icon and select the **Integrations** option. Next, find the **Planner** integration on the list of active integrations and click on its **Settings**.





Step 2

Next, to unlink the integration simply click on the **Unlink integration** button.



To re-enable the integration first, **unlink it** and next click on the **Enable integration** button again. The list of your active projects imported to TimeCamp will be updated immediately.