

Welcome to TimeCamp Help!

Search for articles...



Targetprocess

In this article:

- [Overview](#)
- [Enable integration](#)
- [Track time on imported items](#)
- [Disable integration](#)

Targetprocess is a project management software that allows you to plan and track progress in many types of projects, including scrum and kanban, as well as your own, custom methods. Thanks to TimeCamp integration you'll now be able to track time spent on your work as well.

Overview

The integration will be enabled for the entire account, so **all users will be able to track time on imported tasks**. The integration will be connected to the account of the person who enabled the integration.

Portfolios will be imported as tasks under the Targetprocess project. Bugs and User stories with their tasks will be imported as subtasks under the tasks (projects) in TimeCamp.

We provide an option to **select Portfolios that should or should not be imported from Targetprocess to TimeCamp**. After the integration is enabled and you selected the desired portfolios all lists and items the owner of integration has access to, will be imported to the Projects module in TimeCamp.

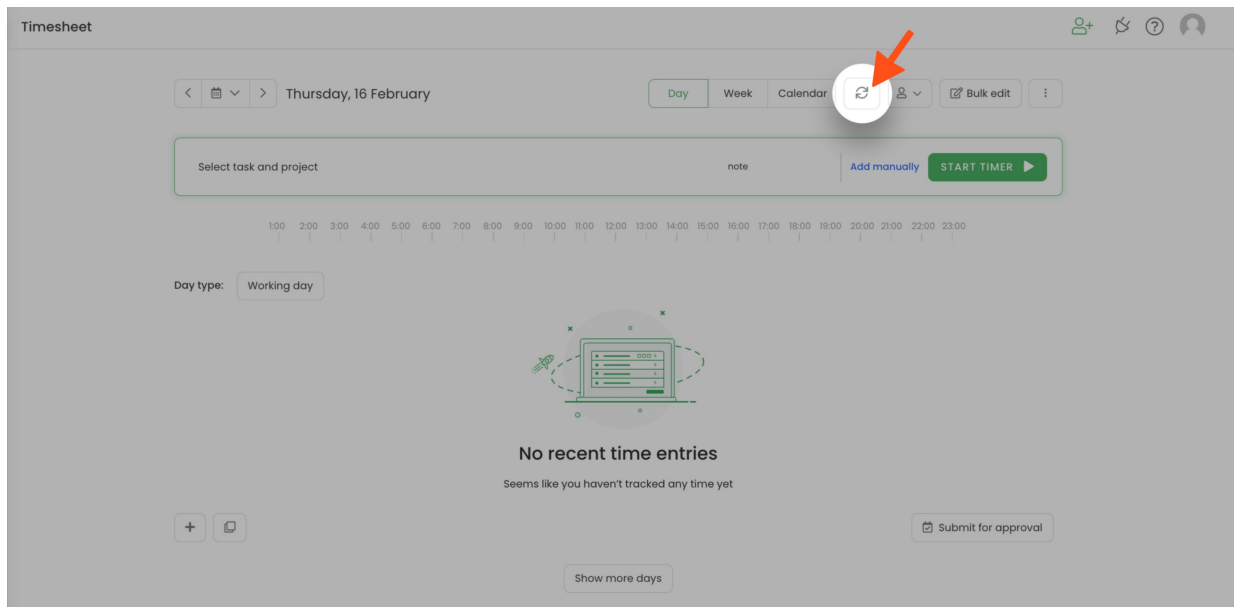
It is not possible to edit the structure of imported items in TimeCamp

As an integration creator, you automatically gain access to all imported items. Other **users are assigned automatically based on their email addresses, which need to match in both TimeCamp and Targetprocess**. You can always assign tasks manually as well. If users are assigned to the main project Targetprocess they will be able to track time to all tasks under the Targetprocess project structure. If users are assigned only to certain tasks, they will be able to track time only to these tasks and subtasks under the tasks' structure.

We don't provide an option to export tracked time from TimeCamp to Targetprocess account.

Entities marked as completed or deleted in Targetprocess will be automatically removed from TimeCamp.

If you create a new item in Targetprocess it will be automatically imported to TimeCamp within 1 hour. To immediately synchronize the integration and update newly added items use the “Force synchronization” option on TimeCamp web Timesheet. Synch will be executed within a few seconds.



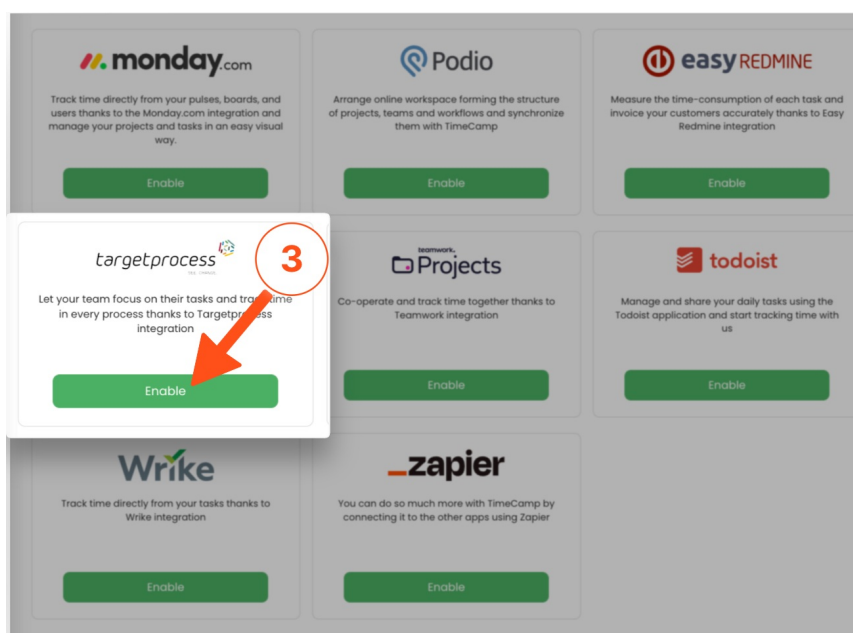
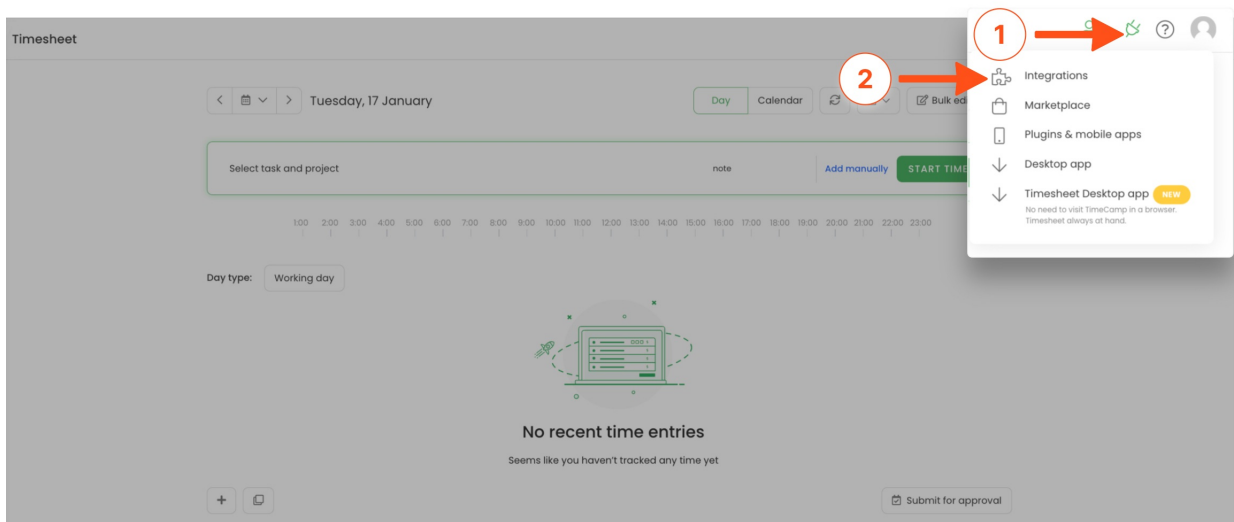
If the user who enabled the integration is not a part of your account anymore, we recommend reenabling the integration.

Enable integration

Only the Administrator of the account can enable the integration.

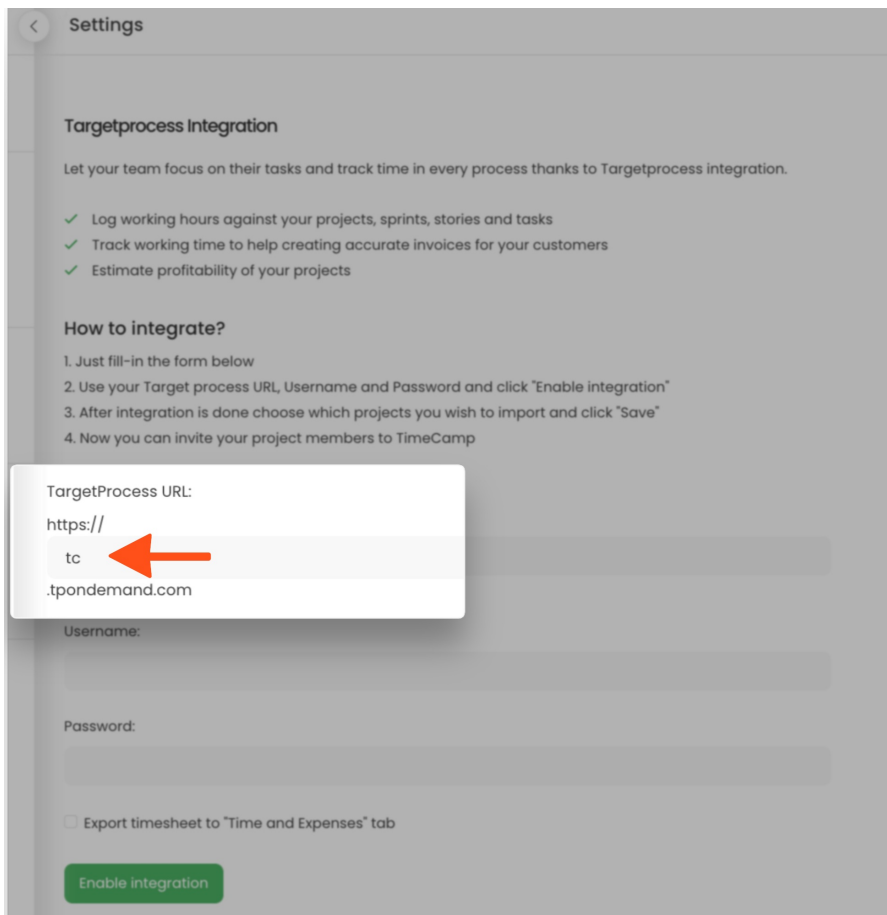
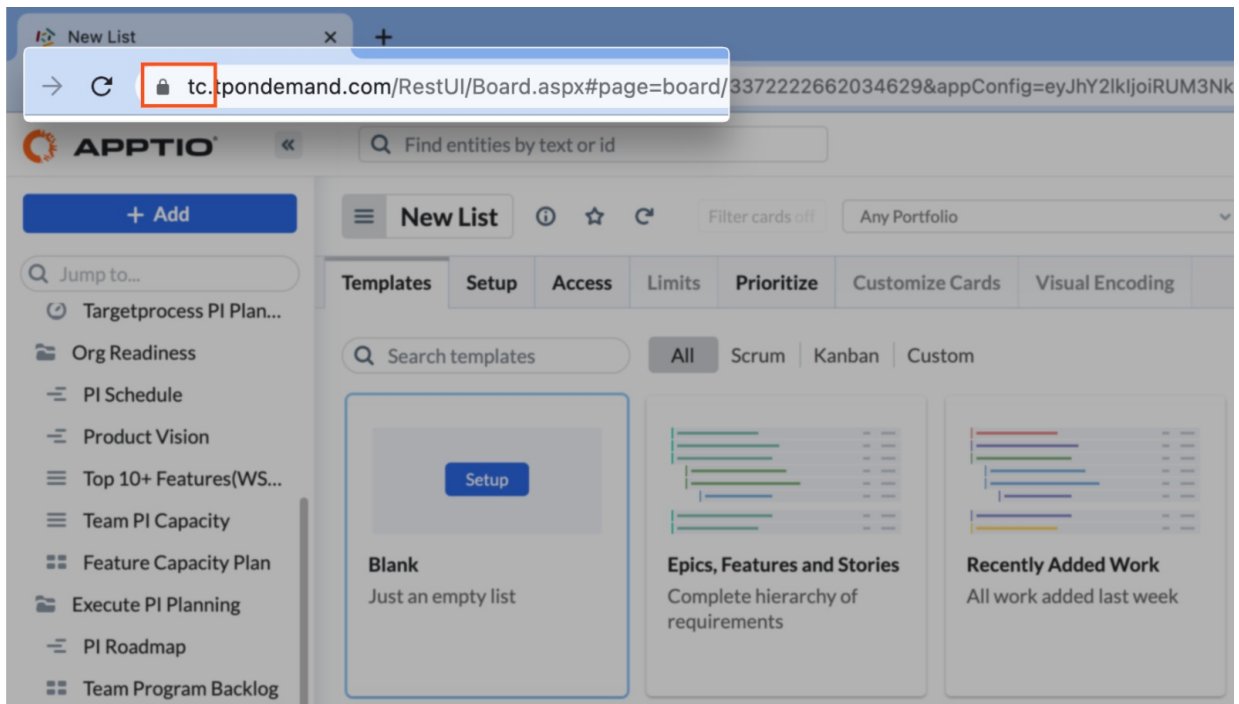
Step 1

To enable the Targetprocess integration, navigate to the plugin icon and select the **Integrations** option. Next, find the **Targetprocess** integration on the list and click the **Enable** button.



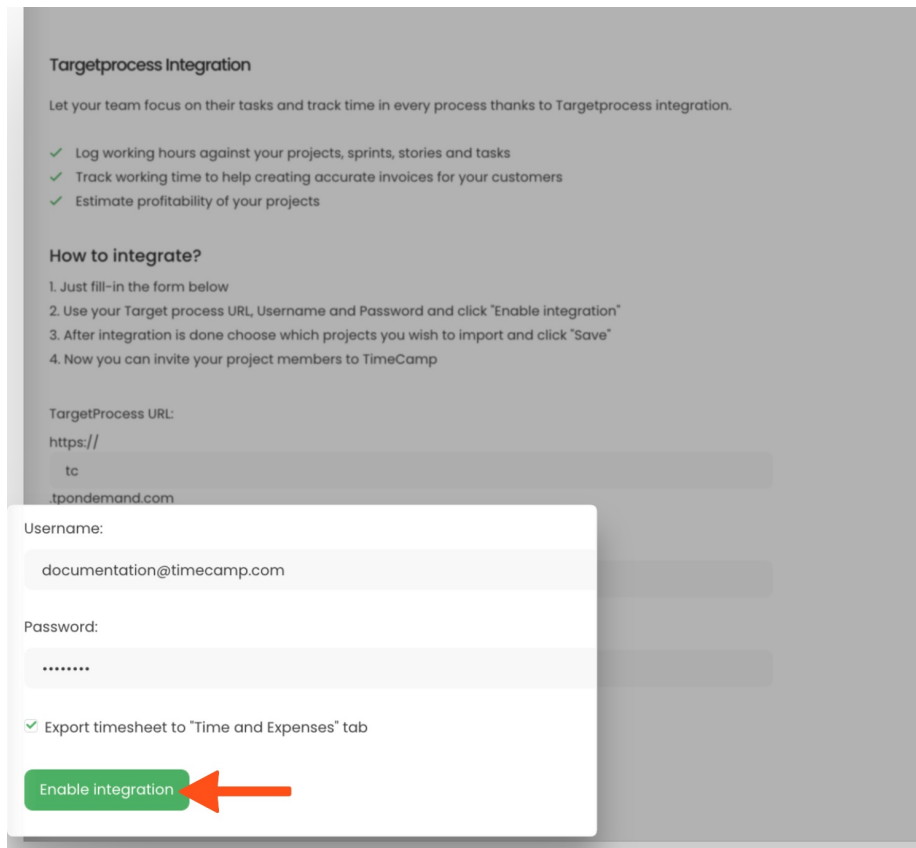
Step 2

Next, enter your **Targetprocess URL**. We need only the part with your account name, not the entire address
"https://[company_name].tpondemand.com"



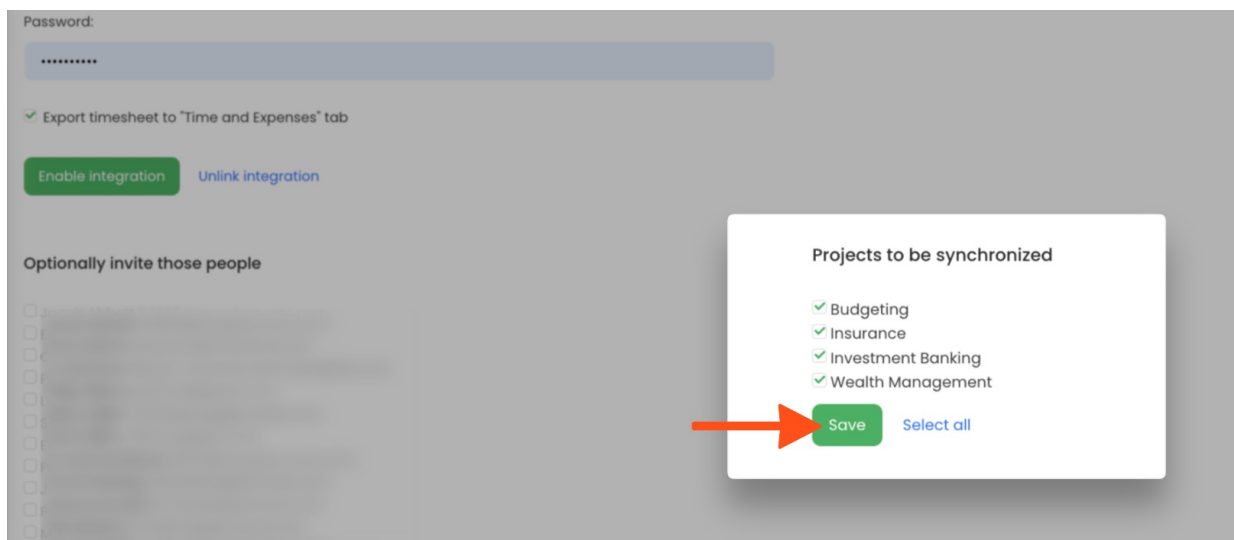
Step 3

Enter your Targetprocess login credentials and click on the green **Enable integration** button.



Step 4

Your next step will be **selecting projects** that should be synchronized to TimeCamp. Import them all or mark specific ones with checkboxes and save your changes.



Your Portfolios and their Bugs, User stories, and Tasks will be imported to the Projects module in TimeCamp. All imported items will be accessible for you to track time using TimeCamp's timesheets, mobile, desktop application, or TimeCamp plugin.

Track time on imported items

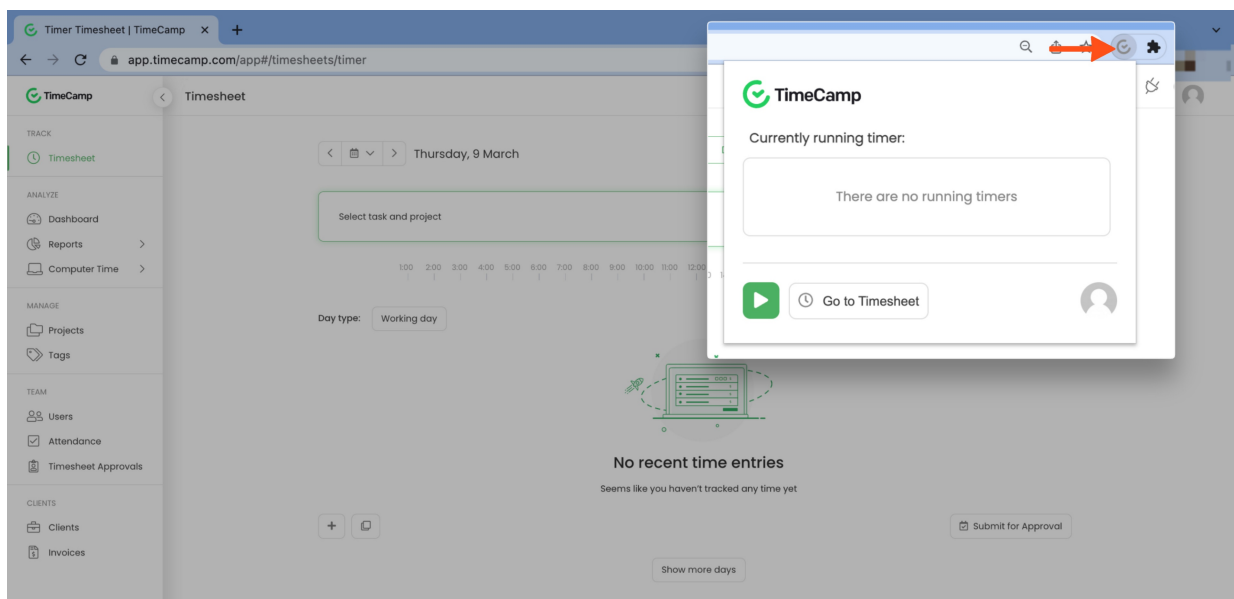
There are a few ways of tracking time in TimeCamp. After the integration is created and all your tasks are imported, you can simply select the desired task from the list and start your timer. Below you can find examples of all available ways of tracking time.

Web Timesheet. Simply select a task using a search box or the drop-down list and run the timer. [Learn more](#)

Desktop app. Click on the “No task” option in a task widget or use the option “Start a task” from the desktop app menu and use a search box or the drop-down list to find the target task. The task widget will be automatically synchronized with your web Timesheet. [Learn more](#)

Mobile app. Go to your Timesheet in the mobile app and click on the “Add” button if you want to create an entry manually or on the “Start” button if you prefer to track time in real time. Next use a search box or the drop-down list to find the target task and start tracking. [Learn more](#)

Browser plugin. If you installed the browser plugin and logged in to your TimeCamp account, just click on the plugin icon next to the URL address. Start the timer and select task without leaving the website you’re working on. When you finished tracking just click on the red “Stop tracking” button. The browser plugin will be automatically synchronized with your web Timesheet. [Learn more](#)



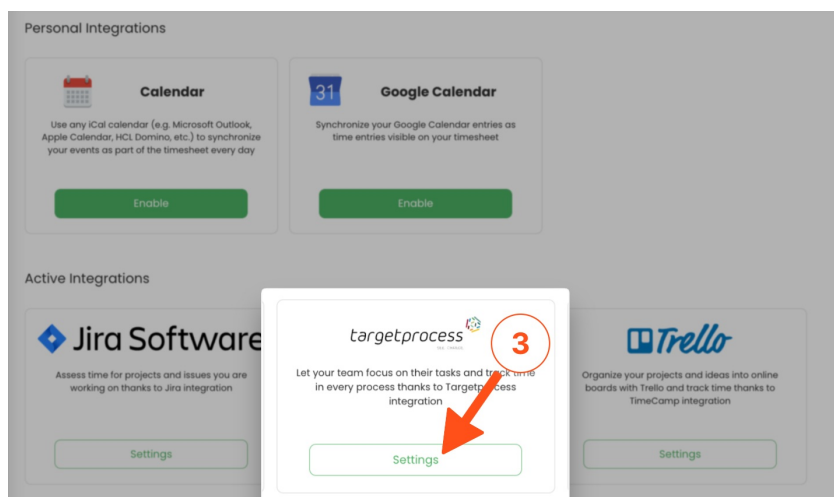
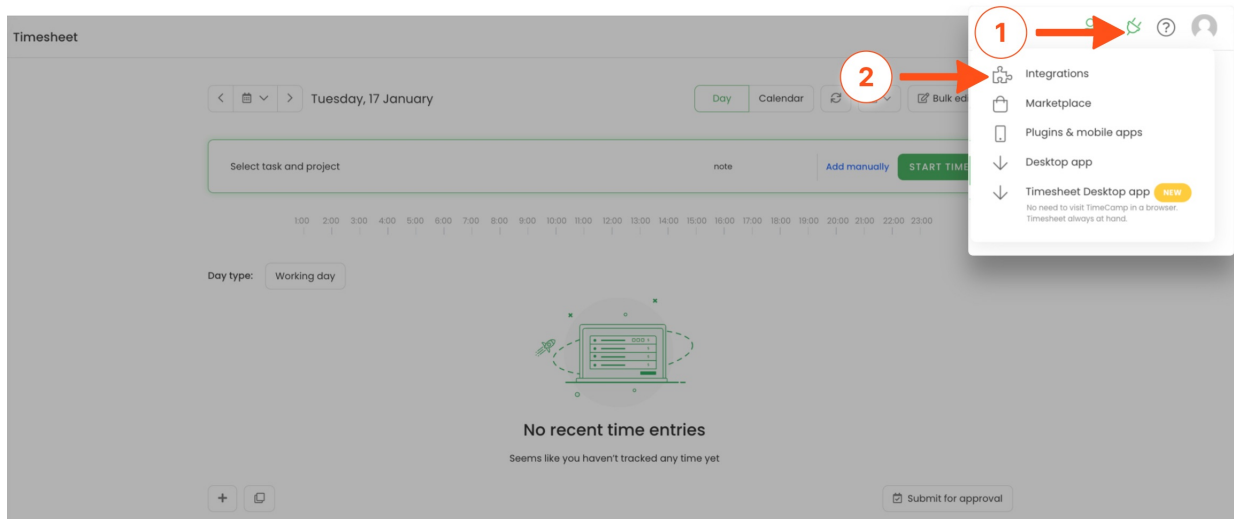
Disable integration

Only the Administrator of the account can re-enable or unlink the integration.

Step 1

If for some reason you would like to re-enable or unlink the integration please navigate to the plugin icon and

select the **Integrations** option. Next, find the **Targetprocess** integration on the list of active integrations and click on its **Settings**.



Step 2

Next, to unlink the integration simply click on the **Unlink integration** button.

How to integrate?

1. Just fill-in the form below
2. Use your Target process URL, Username and Password and click "Enable integration"
3. After integration is done choose which projects you wish to import and click "Save"
4. Now you can invite your project members to TimeCamp

TargetProcess URL:

https://

tc

.tpondemand.com

Username:

Password:

.....

Export timesheet to "Time and Expenses" tab

Enable integration

[Unlink integration](#)



To re-enable the integration first, unlink it, next update the TargetprocessURL, username, password, and click on the **Enable integration** button again. Select the projects you would like to synchronize and the list of active items imported to TimeCamp will be updated immediately.