

Welcome to TimeCamp Help!

Search for articles...

88

Remote work detection

In this article:

- [How to enable the Remote work detection module?](#)
- [Locations](#)
- [Filters](#)
- [VPN](#)

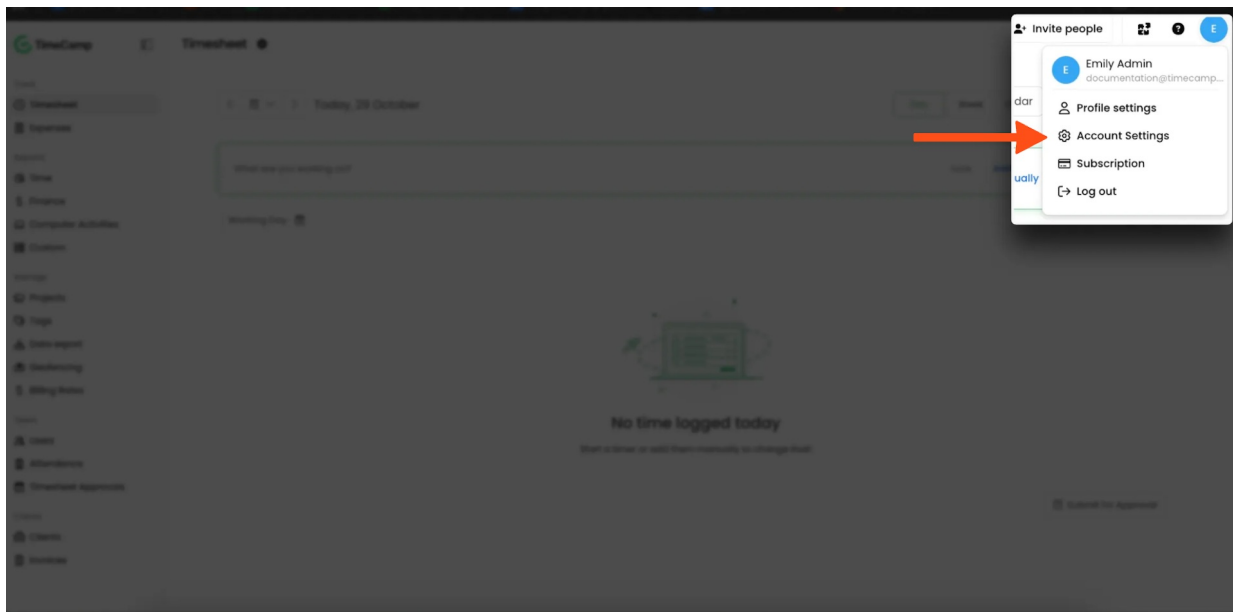
The **Remote Work Detection** module lets you determine whether your employees are working remotely or in the office, and monitor their work location. Please note that employees must have the [TimeCamp desktop app](#) installed on their work computers (**version 1.8.4.0 or later**).

Remote work detection module is available only in Ultimate plan.

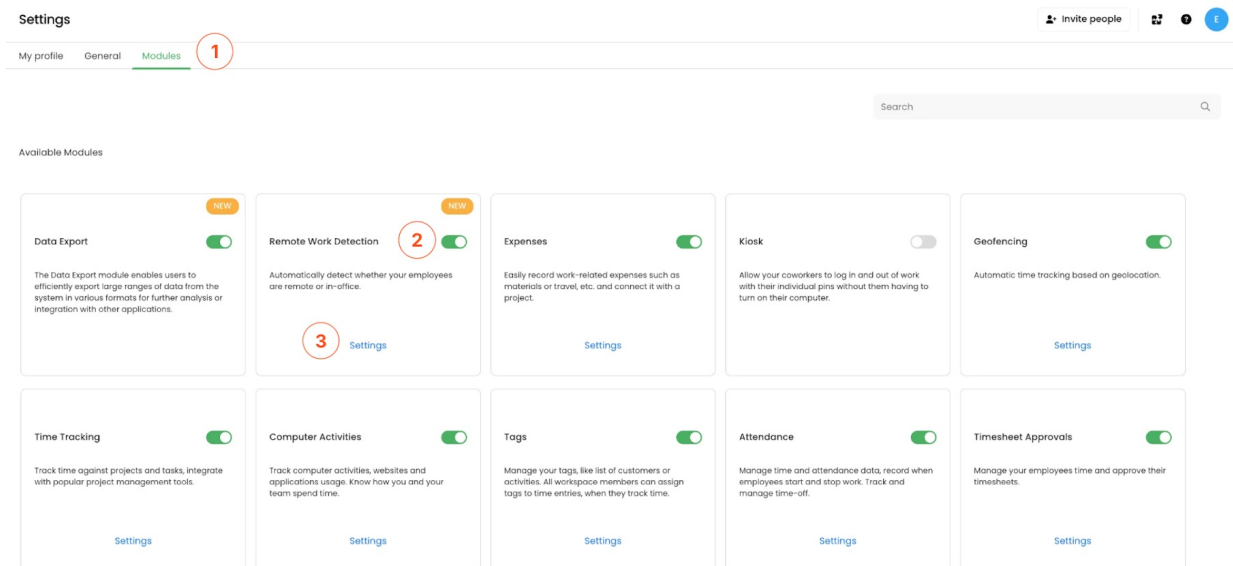
How to enable the Remote work detection module?

To enable the Remote work detection module, click on your avatar in the upper-right corner and select the **Account Settings** option.

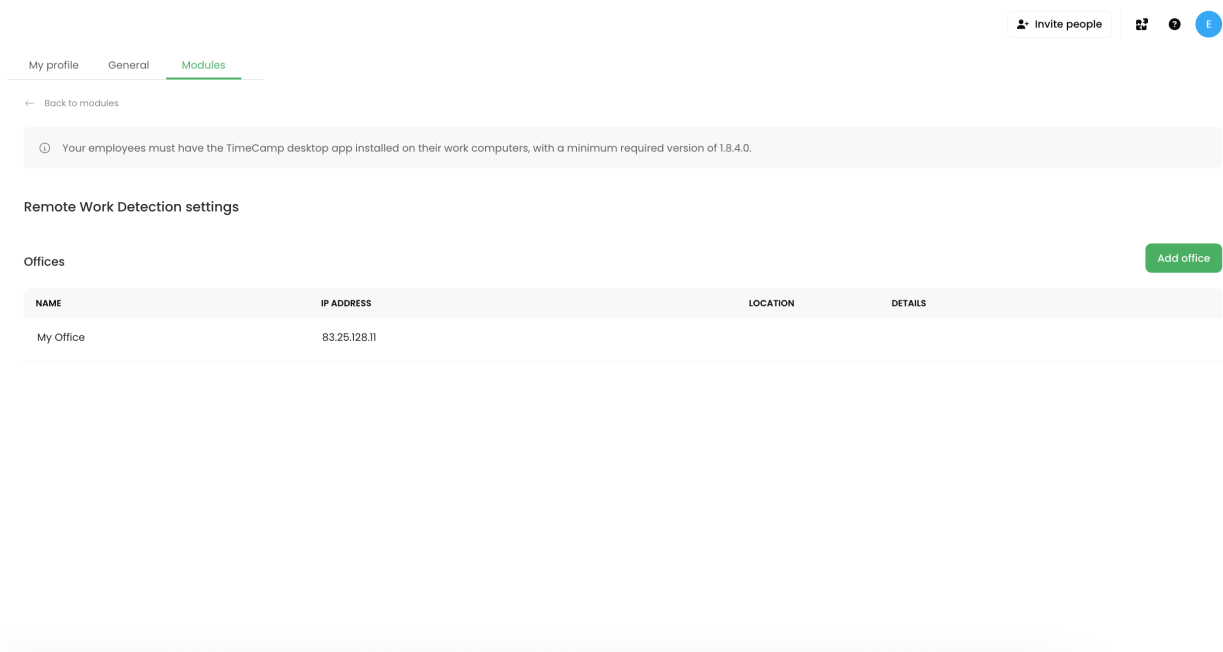
Only the Administrator of the account can enable the Remote work detection module.



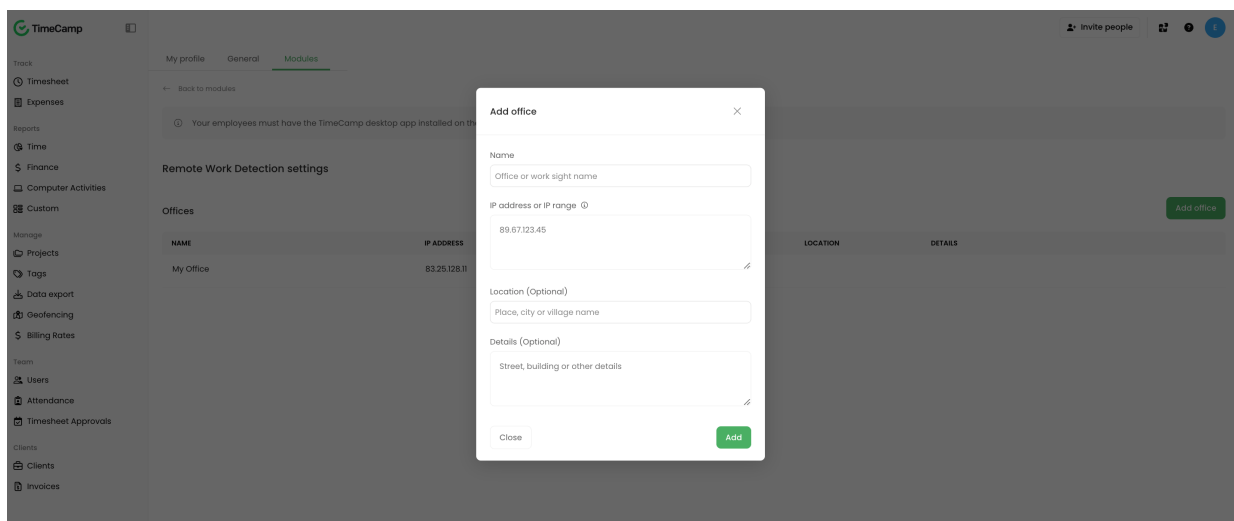
Next, go to the **Modules** tab, find the Remote work module, and click on the **switch button** to enable it.



After the module is enabled click on its **Settings**. To set up your Office IP address, location and details click the green button **"Add office"**

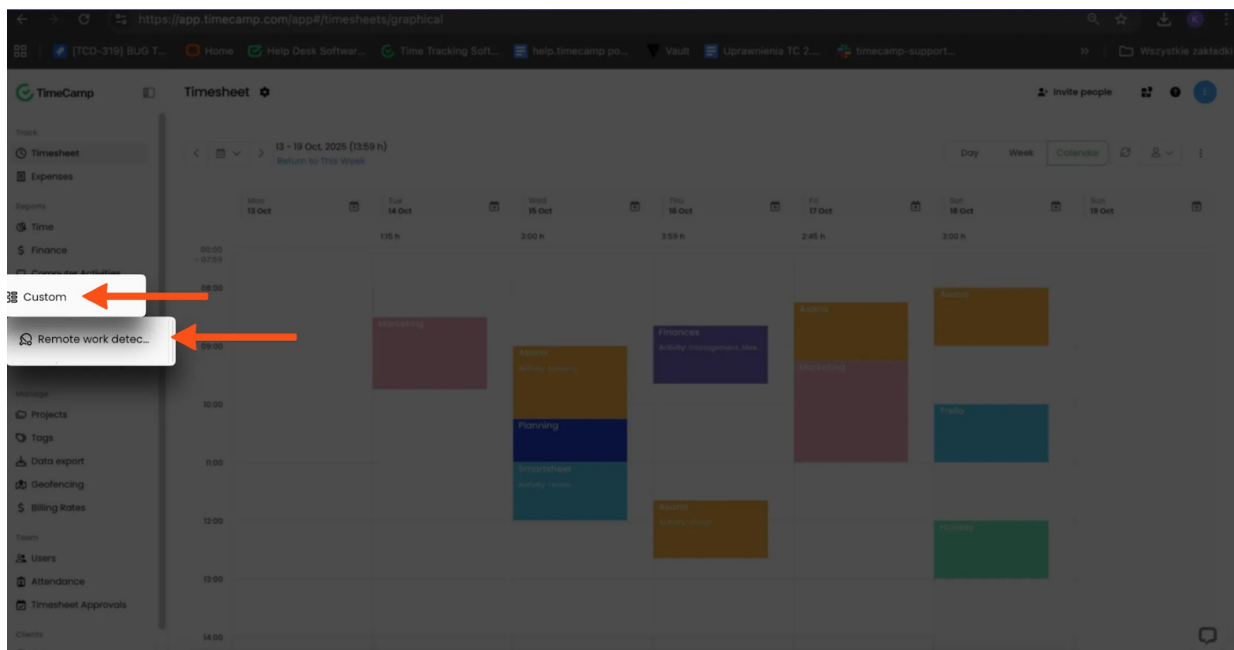


and fill in the information:

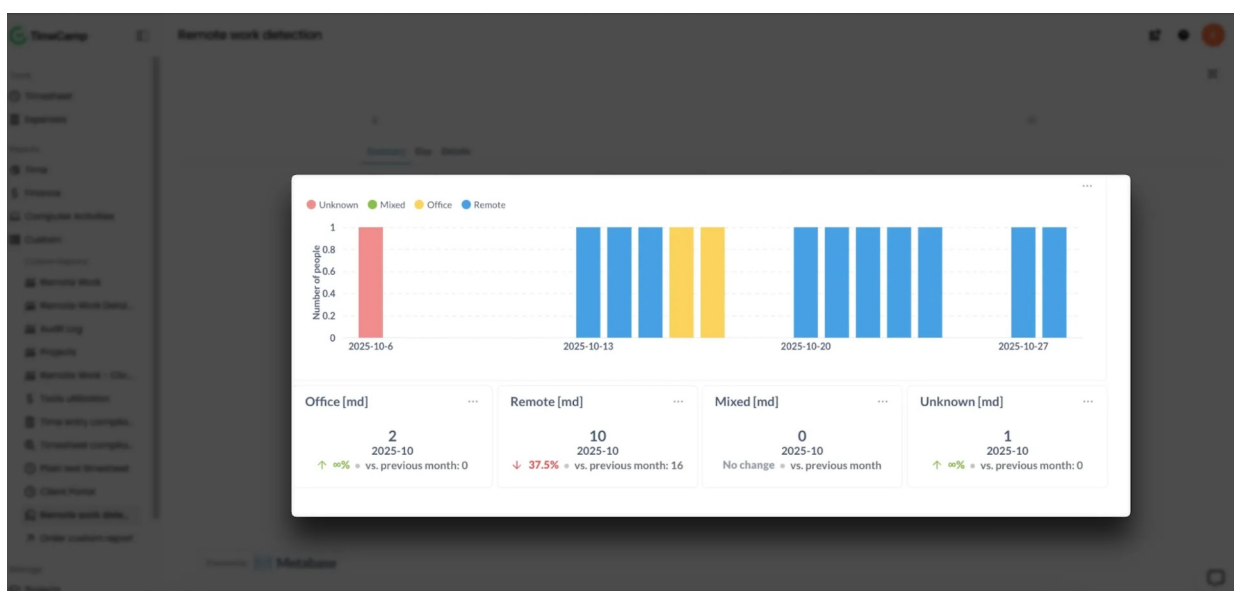


Locations

Once your Office is established, you can view your **Remote work detection** report under Custom reports:



There are 4 types of locations you may see in your Remote work detection report:



Unknown: this location will appear when TimeCamp was not able to retrieve user IP address or user is not using [TimeCamp desktop application](#)

Mixed: this location will appear when user has logged in more than one location in a single day.

Office: this location will appear when your User's IP matches the office IP address you've added in settings.

Remote: this location will appear when your User's IP IS different than any of the established offices.

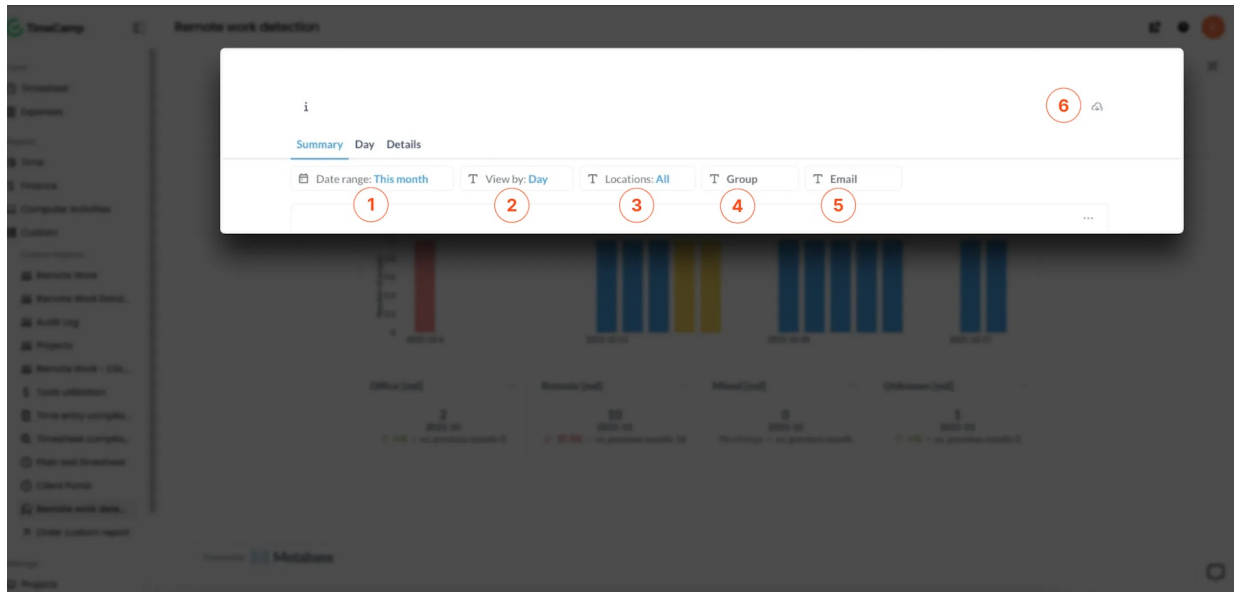
Filters

You can select Summary, Day or Details view of your report.

Summary will show you an overview of locations in selected date range while **Day** will show you a table with locations per day. In **Details** view you will be able to see more information about your User such as: email

address, user name and their group, date, start and end time of their activities, total time of the activity and location.

You can also filter your report and download it:



VPN

Please be advised that if your users are using a VPN that routes all traffic and changes their IP, Remote work detection module will record the VPN's IP and this will affect your report, whereas a split-tunnel VPN won't impact the results.